



Manual Torque Multiplier



Applications

- **alkitronic® M** manual torque multiplier - for energy independent precise tightening and loosening of heavy-duty bolt connections.
- Torques from 200 Nm up to 50,000 Nm.
- The ideal torque tool in high explosion-risk areas
- **alkitronic® M** provide safe, economic, problem-free operation. They replace impact wrenches, pipe extensions and other inadequate methods.

Advantages

- Maintenance-free, compact and robust design. They improve on-the-job safety and have short assembly times.
- Low energy input - high torque transfer.
- Integrated anti wind-up ratchet allows jobs to be performed easily, efficiently and safely.

alkitronic® specials

- The components of the **alkitronic®** power gears are manufactured using a high-precision chipless process - in order to ensure the highest possible operational demands with lowest wear.
- The shearing pin built into the drive shaft protects against input overload.

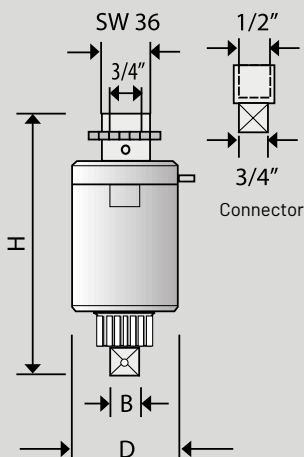


Technical Data: Model **H** (without ratchet) and **HG** (with ratchet)

Type		H10	H15	HG10	HG15	HG20	HG30	HG40	HG50	HG60	HG80
Torque up to (approx.)*	Nm	1400	1400	1400	1400	3500	5000	6000	8000	11500	50000
	lbf.ft	1035	1035	1035	1035	2580	3690	4425	5900	8480	36880
Square drive	B	1/2" / 3/4"	1"	1/2" / 3/4"	1"	1"	1 1/2"	1 1/2"	1 1/2"	1 1/2"	2 1/2"
Reduction ratio		4	4	4	4	16	18	20	24	28	180
Diameter	D mm	85	85	85	85	85	98	109	133	173	275
Height	H mm	180	200	180	200	235	250	280	280	290	360
Weight (approx.)	kg	3.5	4	3.5	4	5	6.5	7	11	19	58

*) When loosening a bolted connection, up to 20% higher torque may be required (loosening torque). We will gladly advise you in detail.

Dimensions



Connector:
1/2" internal square socket -
3/4" external square socket

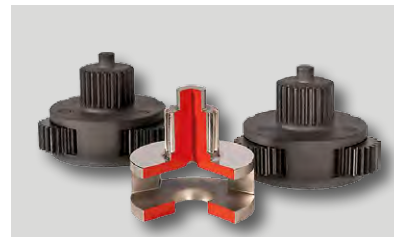
Specifications

Torque Multiplier input via:
3/4" internal square socket torque wrench or conventional ratchets external hexagonal socket SW 36 mm.

Handwheel - for rough turning loose bolts/nuts.

alkitronic® manual torque multipliers are supplied with a support foot (DMA) as standard version. For support rings, backstops, ratchets, torque wrenches, and other components, please see our **alkitronic®** catalog of accessories.

alki TECHNIK GmbH reserves the right to change specifications without prior notice.



alkitronic® - power gear components



alkitronic® M operating on electricity pylons. Accurate tightening via torque wrench.

alkitronic®
HOME OF TORQUE POWER

alkitronic® products
Made in Germany by

alki TECHNIK GmbH
Development, Production and
Distribution of Bolting Systems

Unterlettenweg 4
D-85051 Ingolstadt

fon +49 841 97499-0
fax +49 841 97499-90

info@alkitronic.com
www.alkitronic.com